

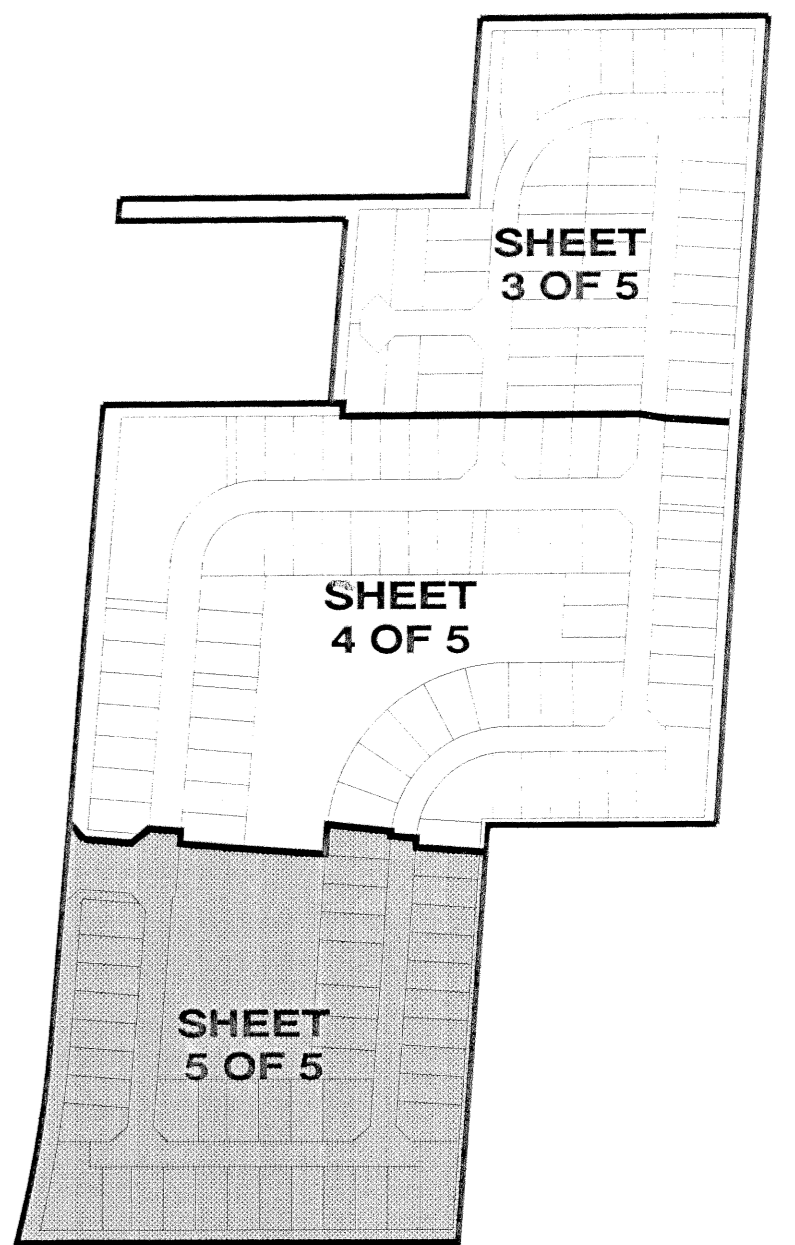
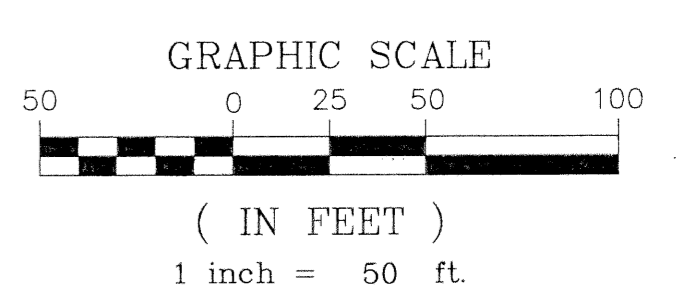
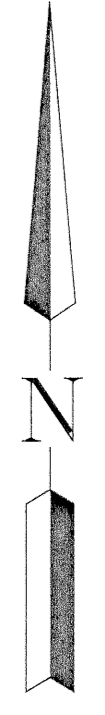
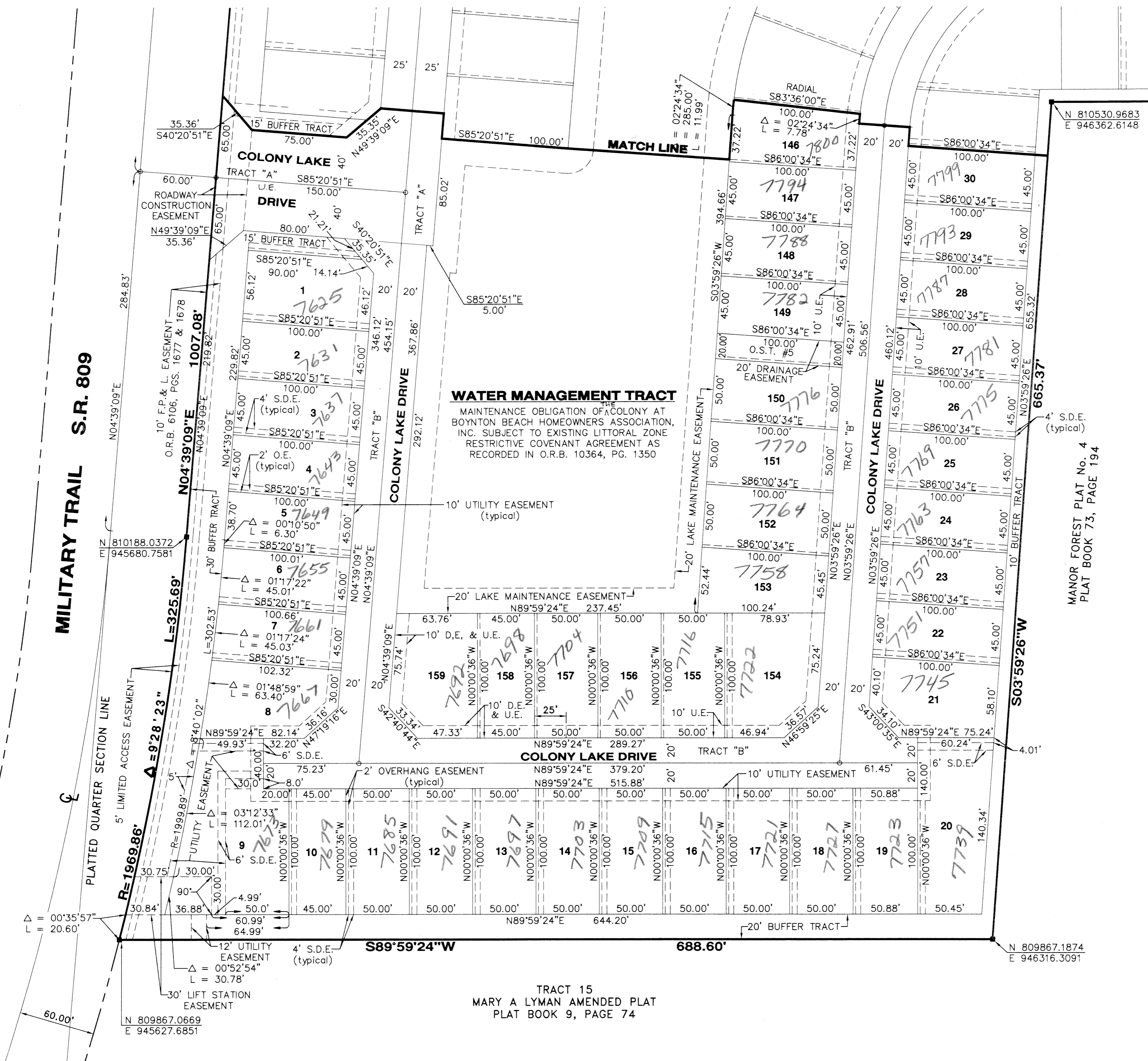
COLONY AT BOYNTON BEACH

0094-001

115

A PLANNED UNIT DEVELOPMENT

BEING A REPLAT OF PORTIONS OF TRACTS 5, 6, 7 & 14,
SOUTHEAST QUARTER (SE 1/4) OF THE
MARY A. LYMAN ET AL AMENDED PLAT OF
SECTION 12, TOWNSHIP 45 SOUTH, RANGE 42 EAST
AS RECORDED IN PLAT BOOK 9, PAGE 74,
PUBLIC RECORDS OF
PALM BEACH COUNTY, FLORIDA



SHEET INDEX

LAND SURVEYOR'S NOTE:
Coordinates shown are grid
Datum = NAD 83, 1990 Adjustment
Zone = Florida East
Linear unit = US Survey Foot
Coordinate system 1983 State Plane Transverse Mercator
Projection
All distances are ground
Scale Factor = 1.00003822
Ground distance x scale factor = grid distance

- = PERMANENT REFERENCE MONUMENT (P.R.M.), STAMPED: "PRM ADAIR & BRADY RLS 3542"
- = PERMANENT CONTROL POINT (P.C.P.), STAMPED: "PRM ADAIR & BRADY RLS 3542"

SUBDIVISION: Colony at Boynton Beach
BOOK: 93
PAGE: 115
FLOOD MAP #: 190B
FLOOD ZONE: B
QUAD #: 34
SE 90-71
TAZ: 415
PUD NAME: The Colony

RADIUS POINT:
N 809867.0669
E 945627.6851

TRACT 15
MARY A LYMAN AMENDED PLAT
PLAT BOOK 9, PAGE 74

LEGEND
S.D.E. = SWALE DRAINAGE EASEMENT
U.E. = UTILITY EASEMENT
D.E. = DRAINAGE EASEMENT
O.S.T. = OPEN SPACE TRACT
O.E. = OVERHANG EASEMENT

		COLONY AT BOYNTON BEACH	
Dr. T.C.M.F.B.	Scale: 1" = 50'	FP1849E	SHEET 5 OF 5
Ck. D.P. Pg.	Date: AUGUST, 1998		
Ap. D.P.	Job. No. 96022		